

**Give A Watt**  
Help fellow co-op members enjoy a bright Christmas. **PAGE 2**

**Payment Assistance**  
Where to find help with your winter energy bills. **PAGE 3**

**Sugar Coated Pecans**  
Whip up a fast batch and watch them disappear! **PAGE 4**



# country living DECEMBER 2015

PUBLISHED FOR MEMBERS OF EAST CENTRAL ELECTRIC COOPERATIVE

## Survey Says ECE Members Hot For Solar

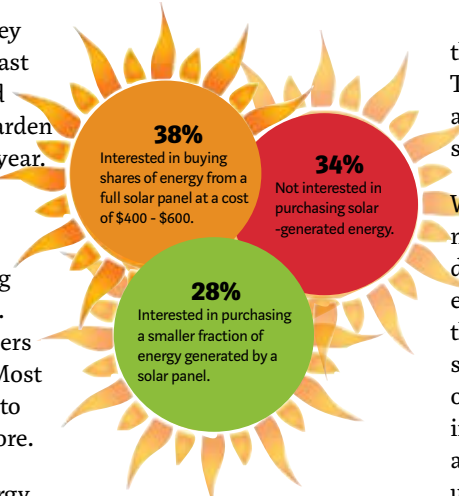
Most would purchase solar-generated power from co-op-owned panels

Based on a recent survey of co-op members, East Central Electric could install a cooperative solar garden on co-op property within a year.

The online survey invited members to respond to a series of questions regarding their interest in solar power. Approximately 2,691 members participated in the survey. Most respondents have belonged to the co-op for six years or more.

So how popular is solar energy among ECE members? While 72 percent of those surveyed said they had no future plans to purchase or install their own wind or roof top solar generating equipment, 65.9 percent said they would be willing to participate in a co-op solar project that allows them to purchase shares of solar generated energy from co-op-owned solar panels.

When asked if they would be willing to pay more for renewable energy, 59 percent of respondents said an



increase of \$2 or more per month would be reasonable.

Tim Smith, ECE general manager, said that he was encouraged by the response to this question because it indicates that members are interested in solar power, but want help from their co-op.

“It tells me they believe in the co-op and have confidence in our ability to do things right,” he said.

The ECE board of trustees will review survey results at

their next board meeting. They are expected to make a decision on the possible solar garden at that time.

With increased interest from members— and steadily declining equipment costs— electric cooperatives across the country are pondering the solar option. Cooperative-owned solar gardens allow interested members to purchase a fraction of their energy use from a solar generated source— minus the maintenance and expense of owning their own rooftop solar system.

It’s the same business model that brought electricity to rural America, Smith pointed out. “We have a group of people who want something and a co-op is the perfect vehicle to deliver it,” he said. “The economies of scale make it more affordable for all, and other members won’t be forced to subsidize it.”

More information on this topic will appear in the January issue of *Country Living*. Please keep reading!

East Central Electric Cooperative  
PO Box 1178 • 2001 S. Wood Drive  
Okmulgee, Oklahoma 74447-1178  
**(918) 756-0833**  
[www.ecoec.com](http://www.ecoec.com)

OFFICE HOURS:  
Monday-Friday, 8 am - 4:30 pm.

POWER OUTAGE HOT LINE  
**(918) 756-0833**

### BOARD OF TRUSTEES

Lowell Hobbs, *President*

Larry Harvey, *Vice President*

Dwight Luther, *Secretary Treasurer*

Max Shoemake, *Asst. Sec. Treasurer*

Ed Kloeckler

Michael Vernnon

Jim Hall

Tim Smith, *General Manager*

### PAYMENT OPTIONS

- Pay online at [www.ecoec.com](http://www.ecoec.com) using SmartHub, or download the app.
- Pay by phone using VISA, Mastercard or Discover at **866-999-4584**. Available 24 hours a day. Convenience fee associated with payments.
- Pay with cash or credit/debit card at participating Moneygram or Pay Site locations. Convenience fee associated with payments.
- Pay using our drive-through window or lobby, Monday - Friday, 8 am to 4:30 pm.
- Pay via automatic draft of your checking or savings account. Sign up online or download the ebill form for easy automatic payments at [www.ecoec.com](http://www.ecoec.com).

*Country Living* is published monthly by East Central Oklahoma Electric Cooperative, Inc., 2001 S. Wood Drive, Okmulgee, Oklahoma 74447. Second class postage paid at Okmulgee, Oklahoma 74447 and at additional mailing office. Subscription price: 60 cents /year. POSTMASTER: Send address corrections to *ECE Country Living*, PO Box 1178, Okmulgee, OK 74447.

## operation roundup update

Operation Roundup funds support local charitable organizations, civic groups, youth programs, community services, and needy families and individuals. For more information on this voluntary bill roundup program, please visit [www.ecoec.com](http://www.ecoec.com).

### Figures to date:

Applications reviewed.....	749
Applications granted.....	526
Applications denied.....	210
Applications tabled.....	15
Scholarships awarded.....	\$149,000
<b>Total Disbursements.....</b>	<b>\$1,238,315.59</b>
Average member contribution.....	44¢





## Holiday Hours

East Central Electric Cooperative will close on December 24-25 for Christmas and January 1 for New Year.

To report a power outage or service problem during this time, please call **918-756-0833**.

## Protect Your Identity Via Co-op Connections

With holiday shopping season in full bloom, now is a good time to protect yourself from identity theft.

Your Co-op Connections program provides identity theft monitoring and resolution benefits that can protect you from tax return fraud, medical ID theft, bank account hacking, credit card skimming, phishing schemes and mail theft.

When you feel your identity has been compromised, Co-op Connections offers proactive assistance, plus step by step guidance through the identity resolution process. They'll also help you with document replacement when items such as Social Security cards, birth certificate, passports and driver's licenses are lost, stolen or destroyed.

The fraud and credit monitoring service protects you from potential fraud by scouring thousands of web-based identity records and sources, and alerts you of any changes. Such actions can help minimize damages caused by identity theft.

For co-op members, the cost to enroll is \$5 per month or \$8 per month for the whole family. For more information, please visit **www.connections.coop**.



# Be An Angel

## Help fellow co-op members enjoy a brighter Christmas

If you are looking for ways to give this holiday season, East Central Electric (ECE) can help. This year, your co-op is giving members the opportunity to help one another through ECE's Give A Watt program.

It's easy to participate in Give A Watt: Simply stop by your co-op office in Okmulgee this holiday season and look for the "energy tree" in the front lobby.

The tree is adorned with light bulbs with numbers on them that correspond to the accounts of co-op members who are struggling to pay their monthly electric bill.

By choosing a light bulb from the tree and donating to that account, you could be helping a family, single mom or an elderly member keep their lights on and their home warm over the holidays.

Anyone is welcome to choose a light bulb and make a donation, however, Give A Watt recipients will remain anonymous.

Please share the spirit of the season with those in need by making a Give A Watt donation. Donations of any amount



are greatly appreciated, and will help Christmas remain merry and bright for those less fortunate.

*Thank you for your donation. Happy holidays!*



Energy Efficiency

Tip of the Month

Remember to close your fireplace damper (unless a fire is burning). Keeping the damper open is like leaving a window wide open during the winter, allowing warm air to escape through the chimney.

Source: Energy.gov

East Central Electric offers free home energy audits to help you find ways to lower your utility bills. For details, please call **918-756-0833**.

# When You Can't Make Ends Meet

Know where to turn for bill payment assistance

**J**ob loss, family illness, even an unexpected car accident can set off an avalanche of financial problems for those on a tight budget.

At East Central Electric (ECE), your account representatives are no stranger to tough times. It is their job to work with struggling members and help them avoid a never-ending cycle of debt.

If you are facing hard times and find you can't pay your monthly electric bill, please contact your co-op *before* your bill is overdue. Our account representatives are happy to work with you to set up a payment plan you can live with. When



additional help is needed, they can provide you with a list of social service agencies and organizations that provide bill payment assistance. For your convenience, that list is printed below:

## DEPARTMENT OF HUMAN SERVICES

### Creek County

10 N Mounds, Sapulpa  
918-746-3300  
(FAX) 918-746-3397

### McIntosh County

PO Box 231, Eufaula  
918-689-1200  
918-689-1265

### Okfuskee County

119 S. 1st Street, Okemah  
918-623-3100  
(FAX) 918-623-3165

### Tulsa County

918-581-2689 (Main)  
918-430-2300  
918-581-2401  
918-581-2033

### Okmulgee County

918-294-2000  
918-280-3100

### Okfuskee County

5005 N. Wood  
Drive, Okmulgee  
918-752-2000

### Muskogee County

727 S. 32nd Street,  
Muskogee  
918-684-5300  
(FAX) 918-684-5363

### Wagoner County

102 N.E. 7th Street,  
Wagoner  
918-614-5000  
(FAX) 918-614-5128

## SALVATION ARMY - MAIN #405-840-0735

### Creek County

Sapulpa, 918-224-4415  
Bristow, 918-367-5400

### Tulsa County

918-582-7201, Ext 3012

### Okmulgee County

918-756-9224

### Okfuskee County

405-840-0735

### McIntosh County

405-840-0735  
Jesus Helping Hands  
Salvation Army,  
918-473-7773

### Wagoner County

405-840-0735

### Muskogee County

918-682-3384  
Gospel Rescue Mission,  
918-682-3489  
Community Food  
Pantry, 918-687-5401

## Light Up Your Holidays For Less

Choose energy efficient LEDs

Choosing LED lights for Christmas will help you use less electricity. They also have the following advantages:

**Safer:** LEDs are much cooler than incandescent lights, reducing the risk of combustion or burnt fingers.

**Sturdier:** LEDs are made with epoxy lenses, not glass, and are much more resistant to breakage.

**Longer lasting:** The same LED string could still be in use 40 holiday seasons from now.

**Easier to install:** Up to 25 strings of LEDs can be connected end-to-end without overloading a wall socket.

Estimated cost of electricity to light a six-foot tree for 12 hours a day for 40 days



Incandescent C-9 lights	\$10.00
LED C-9 lights	\$0.27
Incandescent Mini-lights	\$2.74
LED Mini-lights	\$0.82

Estimated cost\* of buying and operating lights for 10 holiday seasons



Incandescent C-9 lights	\$122.19
LED C-9 lights	\$17.99
Incandescent Mini-lights	\$55.62
LED Mini-lights	\$33.29

\*Assumes 50 C-9 bulbs and 200 mini-lights per tree, with electricity at \$0.119 per kilowatt-hour (kWh) (AEO 2012 Residential Average). Prices of lights based on quoted prices for low volume purchases from major home improvement retailers. All costs have been discounted at an annual rate of 5.6%. Life span assumed to be three seasons (1,500 hours) for non-LED lights.

Great tastes for members of East Central Electric Cooperative

## Sugar Coated Pecans



### INGREDIENTS

- 1 egg white
- 1 tablespoon water
- 1 pound pecan halves
- 1 cup white sugar
- ¾ teaspoon salt
- ½ teaspoon cinnamon

### DIRECTIONS

Preheat oven to 250°F. Grease one baking sheet. In a mixing bowl, whip together the egg white and water until frothy. In a separate bowl, mix together sugar, salt, and cinnamon.

Add pecans to egg whites, stir to coat the nuts evenly. Remove the nuts, and toss them in the sugar mixture until coated. Spread the nuts out on the prepared baking sheet.

Bake at 250° F. for 1 hour. Stir every 15 minutes.

SOURCE: ALLRECIPES.COM

## LOOK UP & LIVE!

Before you climb that ladder to string outdoor lights, check for overhead power lines nearby. Make sure tree limbs are not growing among power lines, since they can also become energized. **Remember to keep at least 10 feet away from overhead lines at all times.**

*Have a safe and happy holiday season!*



If you spot an unsafe electrical situation such as downed pole or electric line, your co-op needs to know about it. Please contact East Central Electric at 918-756-0833.

THIS HOLIDAY, GIVE THE GIFT  
YOUR WHOLE FAMILY WILL ENJOY  
*with*  
**HIGH SPEED INTERNET**



**\$50**  
WALMART  
GIFT CARD

New exede accounts will receive a \$50 Walmart gift card through the month of December.

Call **918-756-0833** Today!



**ECO SERVICES, LLC**