

■ **Co-ops Support Solar**

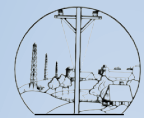
Co-ops sponsor majority of community solar projects. **PAGE 2**

■ **Questions on Solar**

Five common questions on ECE's Community Solar Project. **PAGE 3**

■ **Free Booth Space**

Vendors, bring your products to the ECE Annual Meeting! **PAGE 4**



East Central Electric Cooperative
PO Box 1178 • 2001 S. Wood Drive
Okmulgee, Oklahoma 74447-1178
(918) 756-0833
www.ecoec.com

OFFICE HOURS:
Monday-Friday, 8 am - 4:30 pm.

POWER OUTAGE HOT LINE
(918) 756-0833

BOARD OF TRUSTEES

- Lowell Hobbs, *President*
- Larry Harvey, *Vice President*
- Dwight Luther, *Secretary Treasurer*
- Max Shoemake, *Asst. Sec. Treasurer*
- Ed Kloeckler
- Michael Vernnon
- Jim Hall
- Tim Smith, *General Manager*

PAYMENT OPTIONS

- Pay online at www.ecoec.com using SmartHub, or download the app.
- Pay by phone using VISA, Mastercard or Discover at **866-999-4584**. Available 24 hours a day. Convenience fee associated with payments.
- Pay with cash or credit/debit card at participating Moneygram or Pay Site locations. Convenience fee associated with payments.
- Pay using our drive-through window or lobby, Monday - Friday, 8 am to 4:30 pm.
- Pay via automatic draft of your checking or savings account. Sign up online or download the ebill form for easy automatic payments at www.ecoec.com.

countryliving

JUNE 2016

PUBLISHED FOR MEMBERS OF EAST CENTRAL ELECTRIC COOPERATIVE

GOING SOLAR — JUST DO IT!

Subscribing to ECE's Solar Project is an investment in lower energy costs

Seventy-eight years ago, East Central Electric (ECE) members invested in an "impossible" notion—rural electricity. Because of their \$5 investment, we enjoy lights and many other luxuries today.

"By signing up for solar panels, ECE members are stepping up to support the growth and development of the solar industry. They are also participating in the best possible solution to controlling rising power costs."

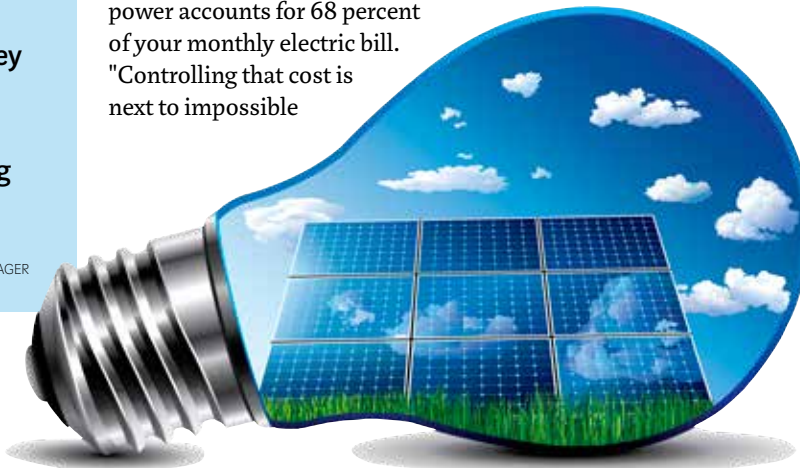
—TIM SMITH, ECE GENERAL MANAGER

advent of lights, the benefits of solar power will grow as more members subscribe.

The benefit to your co-op—and you—is that it provides a source of power that is free from the price whims of fossil fuel-generated power. By serving as a source of alternative power for your co-op, ECE becomes less reliant on wholesale electricity generated using natural gas or coal. Currently, wholesale power accounts for 68 percent of your monthly electric bill. "Controlling that cost is next to impossible

without a sound and reliable alternative that meets our growing power needs," said Tim Smith, ECE general manager.

"By signing up for solar panels, our members are stepping up to support the growth and development of the solar industry. They are also participating in the best possible solution to controlling rising power costs," he added.



ECE's community solar project is a similar investment. Members who subscribe to one or more solar panels are investing in a safe, clean and renewable source of energy for their co-op. Like the

For more details on ECE's Community Solar Project and how you can participate, please call your co-op at **918-756-0833** or visit www.ecoec.com.

operation roundup **update**

Operation Roundup funds support local charitable organizations, civic groups, youth programs, community services, and needy families and individuals. For more information on this voluntary bill roundup program, please visit www.ecoec.com.

Figures to date:

Applications reviewed.....	796
Applications granted.....	556
Applications denied.....	224
Applications tabled.....	16
Scholarships awarded.....	\$169,000

Total Disbursements.....\$1,305,940.61
Average member contribution.....44¢



Country Living is published monthly by East Central Oklahoma Electric Cooperative, Inc., 2001 S. Wood Drive, Okmulgee, Oklahoma 74447. Second class postage paid at Okmulgee, Oklahoma 74447 and at additional mailing office. Subscription price: 60 cents /year. POSTMASTER: Send address corrections to ECE Country Living, PO Box 1178, Okmulgee, OK 74447.

District Meetings Coming Up



ECE members in Districts 4 and 7 will meet this month to nominate candidates for cooperative board of trustees. If you live in District 4 or 7, you will receive an official meeting notice in the mail.

Please save the dates and make plans to attend.

June 20, 2016

ECE District 7 Meeting
6:30 pm, Bristow Housing Authority

June 23, 2016

ECE District 4 Meeting
6:30 pm, Muskogee Armed Forces Reserve Center

Please Notice the Notice

ECE Annual Meeting and District Meeting notices mailed to members will include a perforated registration form along the bottom.

If you plan to attend an ECE District Meeting or the ECE Annual Meeting, please bring this form to the meeting. The form will make it easier and faster for you to register at the meeting.

Meeting notices will arrive in an enclosed envelope that is clearly marked "District Meeting Notice" or "Annual Meeting Notice."

Connect with East Central Electric on Facebook for updates on power outages and information on member benefits and services, energy saving tips and more. If you like what you see, we'd appreciate your "thumbs up."



Thank you for your support!

Electric Co-ops Support Solar

Co-ops step out to sponsor community solar projects

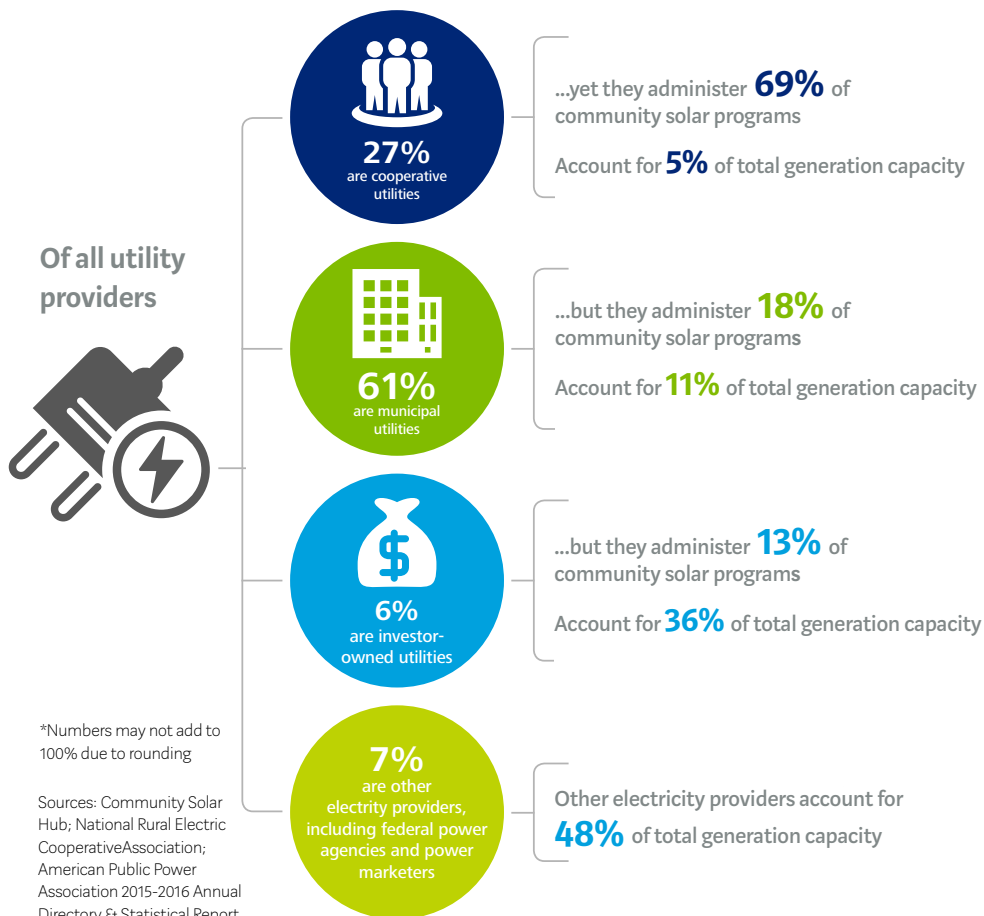
Community solar allows many consumers to share the benefits of one local renewable energy source. By pooling investments from multiple consumers, community solar projects provide power and/or financial benefit in return.

The notion is familiar to electric co-ops, which is why co-ops lead the nation when it comes to utility-sponsored solar projects. While co-ops represent only 26 percent of the nation's electricity providers, they account for more than half of U.S. community solar projects. In Oklahoma, 11 local distribution co-ops including East Central Electric are sponsoring community

solar projects. Partnering in these projects is Western Farmers Electric Cooperative (WFEC), a cooperative-owned generation and transmission facility serving 22 co-ops in New Mexico and Oklahoma. Billy Moore, ECE director of member services, said WFEC's participation is making it cost effective for local co-ops to offer community solar projects because they cover the majority of the costs involved.

WFEC studies show that power provided by co-op-sponsored community solar projects can help them reduce their peak, which is a key factor in wholesale costs for local co-ops and their members.

How Does Community Solar Fit Into The U.S. Electric Utility Market?





Five Common Questions About ECE Community Solar

East Central Electric is hearing great feedback from members on the ECE Community Solar Project. Co-op members support the move toward renewable energy and want to know more about the project.

For your convenience, we've included common questions and answers, below:

Is the \$350 a one time fee?

Yes, the fee to subscribe is \$350 per solar panel. This is a one-time fee and is the only cost involved for participating in ECE's Community Solar program.

How long is my subscription good for?

As a Community Solar subscriber, your subscription will last until September 2041 or until the license is terminated by the member.

What happens if I move?

If you move to another home on ECE lines, your subscription will transfer to your new address. If your new home is located elsewhere, ECE will buy back your solar panels for the

same price you paid, \$350 per panel, less four percent depreciation each year.

How much credit will I get per panel?

Participating members receive a percentage of the total solar array production each month based on their contribution to the project. Each month, the total kilowatt-hour (kwh) output of the solar system is divided by the number of panels.

A credit amount per kwh is determined each year and applied to your monthly kwh output. The first year credit is \$.034 per kwh.

A separate line on the participant's electric bill will reflect the credit multiplied by your share of the total solar system production for that month.

If any damage occurs to the panels, will I be charged for the repairs?

No, all repairs and maintenance are covered by your electric co-op. ECE Community Solar subscribers enjoy the benefits of solar power without worrying about damages, malfunction or repairs.

ROOFTOP PANELS VS. COMMUNITY SOLAR

If you're considering installing rooftop panels on your home, community solar could save you some money. How?



- ECE's Community Solar Project eliminates certain costs associated with going solar. For example, when you opt for shared solar you eliminate the need for an expensive site assessment, which is necessary if you install your own solar generating system.
- Community solar allows you to separate your energy assets from your home. If you move, your solar shares can be transferred separately from your residence to a new home within ECE territory or sold to another member.
- No maintenance costs. ECE Community Solar subscribers never have to worry about maintenance or repair costs. This is covered by the co-op.

For details on ECE Community Solar, please call **918-756-0833**.



Be a solar subscriber!
Call ECE today to support clean, renewable sun power. **918-756-0833**.



Energy Efficiency

Tip of the Month

Avoid setting your thermostat at a colder setting than normal when you turn on your air conditioner. It will not cool your home any faster and could result in excessive cooling and unnecessary expense.

source: energy.gov

Liberty Pass

Finally a service capable of light year

Streaming

Lets you avoid restrictions automatically imposed when you use up your data allowance

exede
INTERNET



ECO Services, LLC

Call Now 918-756-0833

Recipes

Great tastes for members of East Central Electric Cooperative

Blackberry Peach Pie

INGREDIENTS

3 cups fresh blackberries 3 fresh peaches
- peeled, pitted, and sliced
3 tablespoons cornstarch
¾ cup white sugar
1 double crust ready-to-use pie crust
2 tablespoons butter, melted
1 tablespoon ground cinnamon
½ teaspoon ground nutmeg



DIRECTIONS

Preheat oven to 450°F. Mix the blackberries, peaches, cornstarch, and sugar in a large bowl.

Press one of the pie crusts into the bottom of a 9-inch pie pan. Pour the blackberry mixture into the pie crust. Cover with the remaining pie crust. Crimp the edges of the two crusts together to seal. Cut slits in the top of the pie to vent. Brush the top with the melted butter. Sprinkle the cinnamon and nutmeg over the top.

Bake in preheated oven for 15 minutes. Reduce the oven temperature to 350°F. and continue to cook until top crust is golden brown, 35 to 40 minutes.

FREE BOOTHS

at ECE Annual Meeting

If you'd like to market your crafts, tools, quilts, artwork, jewelry or other products, set up a booth at the East Central Electric Annual Meeting! The meeting on Thursday, July 28, 2016 at OSU-IT's Covelle Hall in Okmulgee draws a large crowd—and booth space is free.

Business owners, home-based businesses or non-profit organizations that wish to set up a booth must reserve a space using the form below. Reservation deadline is July 1, 2016.

If you have questions about vendor booths, please contact Katherine Russell at **918-756-0833**.

2016 ECE Annual Meeting Booth Reservation

Thursday, July 28, 2016 • OSU-IT, Covelle Hall

___ Food Space

___ Arts & Crafts Space

(Food vendors are required to submit a food handler's permit per OSU-IT)

Organization _____

Contact Name _____

Daytime Phone _____ Email _____

Mailing Address _____

City _____ State _____ Zip _____

Products to be sold _____

Send reservation form to: East Central Electric Cooperative

Attn: Katherine Russell

PO Box 1178

Okmulgee, OK 74447

Or send via email to:

krussell@ecoec.com